

YK23-SY04137D-匈牙利-item1-Tile Roof

Installation Manual for Tile Roof Mounting System

Step 1: we must know the Components List.


Mounting Rail	Rail Splice	End Clamp Kit	Mid Clamp Kit	Hook	Wooden Screw
					

Tile roof solar mounting system will be installed by roof hook with 3 wooden screws.

Step2: Check drawing:

A  represent a hook.

A  represent a PV module.

A line like this  , represent a mounting rail.

Please read and understand the drawings. We can learn the following information.

How many hooks in a row at the each array.

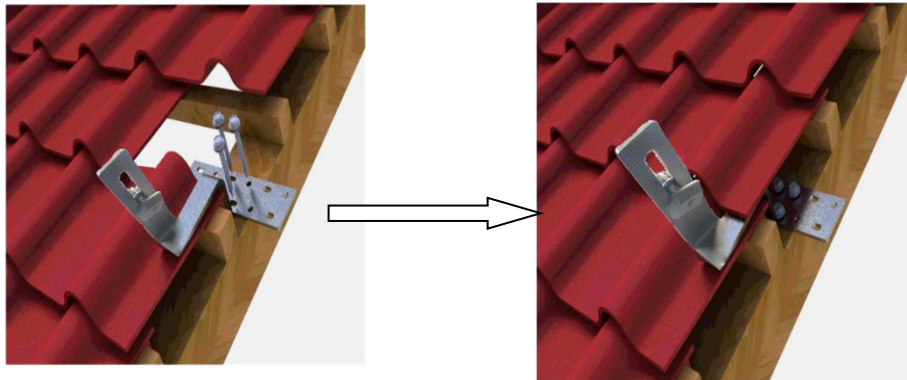
How long is it between 2 hook kits.

How long is per rail at the each array.

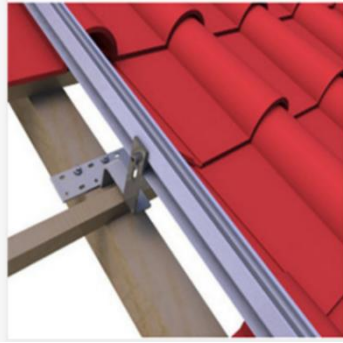
Then we will give you how many rails in a row as follows.

Array	Total length	Comprise
5*2	5950mm	2100mm*2+1750mm

Step3: Installing Roof hook upon tile roof.



Partially open the tile and fix the hook to the purlin of the roof.



Step4: Installing Mounting rail by the side of roof hook as bellow:

We can fix the mounting rail at any side of hook according to the actual condition.

We use M8*25 inner-hexagonal socket bolt (contain 1 flat,1 spring,1 aluminum nut) to fix.

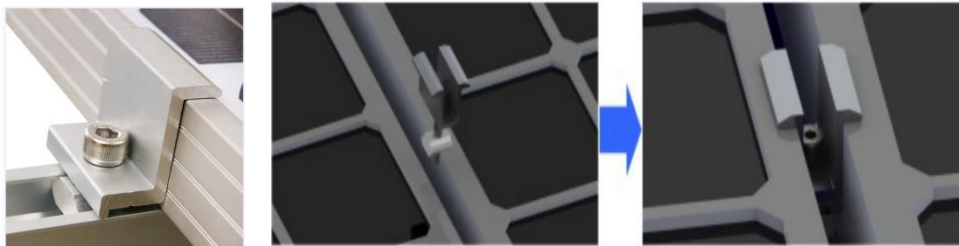
The space between each 2 rails should be between 65%~75% of the modules length.

Step 5: Use rail splice kit to connect each 2 mounting rails:

When the rail is too long, the rails will be connected by the rail splice, as bellow



Step6: Installing PV panel by End clamp and mid clamp.



Make sure all parts fixed steady. End.

We are very appreciated that you can choose our products, and anything confused, please let us know without hesitate.